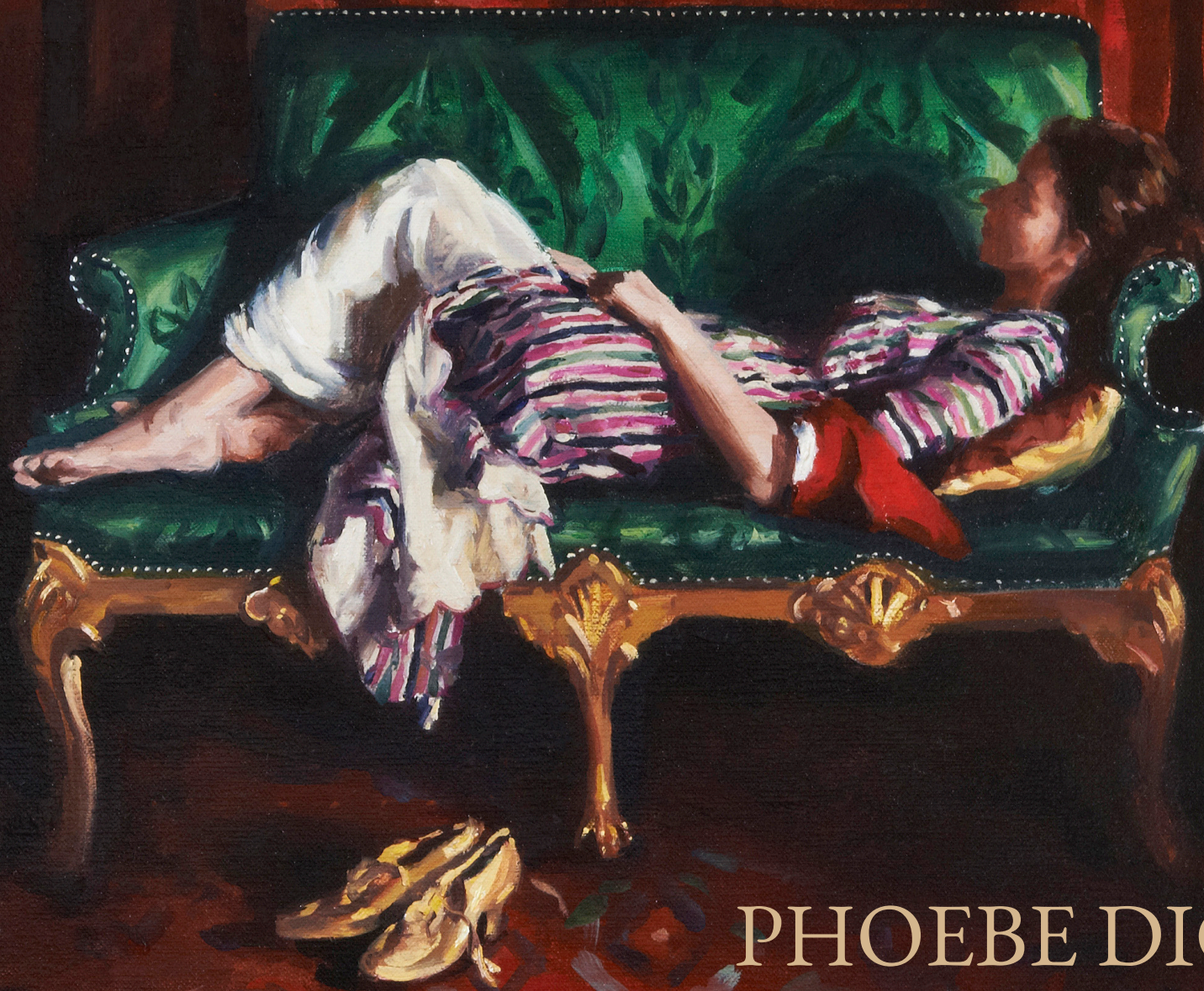
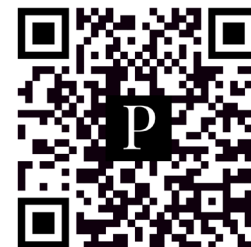


GREAT HOUSES AND
GARDENS OF ENGLAND



PHOEBE DICKINSON

Dream Coat and Gold Slippers
Oil on canvas
57 x 43cm



PHOEBE DICKINSON

GREAT HOUSES AND GARDENS OF ENGLAND

8th - 23rd November 2023

Monday - Friday 9am - 6pm

Saturday 18th 10am - 1pm

Friday 23rd 10am - 1pm

DICKINSON

58 Jermyn street

St James's London

SW1Y 6LX

For sale enquiries: 07896606012

Email: studio@phoebedickinson.com

For gallery enquiries: +44 (020) 7493 0340

E mail: London@simondickinson.com

Upon receipt of this catalogue all works are available for sale. All works are framed and the price includes the frame. The entire exhibition, including photos of the framed works, can be viewed at www.phoebedickinson.com.

Great Houses and Gardens of England is an exhibition of paintings executed over an eighteen-month period during which I travelled around Britain and captured many of the nation's most iconic and storied houses and gardens. Inspired by the new generation of homeowners who are transforming these great houses it has been a complete joy to have painted a series of modern conversation pieces and landscapes which show behind-the-scenes glimpses of life in the British stately home today.

At Castle Howard, I was given the opportunity to capture interior designer Remy Renzullo at work redesigning the interiors; and at Belvoir Castle I painted the Manners sisters against the backdrop of the famous antique Chinese wallpaper in the Wellington room. I have particularly enjoyed showing the work of earlier creatives in my paintings – from the Palladian interiors of William Kent at Houghton Hall to the romantic garden designs of Julian and Isabel Bannerman which grace the grounds of Seend Manor, Houghton's walled garden and Upper Sydling. My hope is that these threads help draw the series together – while also showing how these places have changed over time, as each new generation makes their mark.

The spark for this series of works came during the process of painting the Cholmondeley Children at Houghton Hall in 2017. I had been generously given the freedom to follow my own vision in portraying them and I opted for a less traditional group portrait, utilising the custom of the conversation piece, I placed the children in the stone hall of Houghton hall. I liked the way their innocence, casual poses and modern clothes contrasted with the grandeur of the surroundings.

My intention is for these paintings to be a celebration of the beauty and creativity in these wonderful houses as well as showing their inhabitants in unguarded moments. I've tried to capture character through telling details – a pair of kicked-off slippers, a child too absorbed in a book to look up, a dog sleeping in a kitchen doorway.

For me a painting always tells a story. Portraits have a natural frontal focus on the sitter's face, and I found myself longing to do a profile, or even the back of a head, or to move the figures deeper into the background – and tell the story of these incredible environments. These places speak to me because of all the thought and creativity that's already gone into them. The architecture, the furniture, other artworks on the walls, the combinations of colour and texture, even the way the light falls into a room - which is so important for a painter – has been thought through. They are incredibly rich, and not always in the ways you'd expect. I must confess that making these paintings has been a great excuse to go and have a good look around these houses and gardens which I've spent years admiring and been endlessly inspired by. I'm so pleased to be able to share a little of that inspiration with you.



1 The Cholmondeley Children
Oil on canvas
163 x 117cm

With huge thanks to the house owners who so generously allowed me in to their homes and whom I am immensely grateful to.

Badminton House
Belvoir Castle
Biddick Hall
Blenheim Palace
Buckhurst Park
Castle Howard
Daylesford House
Highclere Castle
Highgrove House
Hodnet Hall
Houghton Hall
Iford Manor
Kiftsgate Court
Seend Manor
Sheringham Hall
Southrop Manor, Thyme
Stancombe Park
Upper Sydling House
Wortley House

Thank you also to those who have so kindly lent me back their paintings.

2 Walled Garden at Upper Sydling
Oil on board
54.5 x 67.5cm





3 Dream Coat and Gold Slippers

Oil on canvas

43 x 57cm

**4 The Steps Leading to the
Great Terrace at Iford Manor**

Oil on board

52cm x 66cm





5 The Rose Garden at Seend Manor
Oil on board
51.5 x 61.5cm

6 Girl in the Green Room
Oil on canvas
76.5 x 95.5cm





7 The Pool House at
Send Manor
Oil on board
53 x 65cm



8 The Manners Sisters at Belvoir Castle
Oil on canvas
118 x 105cm



9 Girl Reading
Oil on canvas
58 x 70cm

10 The Garden Door
Oil on board
30.5 x 38cm





11 The Potager
Oil on board
64 x 75cm



12 Heading Out
Oil on canvas
142 x 123cm





13 Girl Sleeping
Oil on canvas
71 x 85.5cm

14 Sunset at Houghton
Oil on board
20 x 32cm



15 Alethea
Oil on canvas
95 x 135cm

**16 The Bamford Grandchildren at
Daylesford House**
Oil on canvas
177 x 234cm





17 The Thyme Walk, Highgrove Gardens
Oil on board
40 x 55cm

18 The Wisteria Window
Oil on board
46 x 56cm





19 Quinces
Oil on canvas
40.5 x 53.5cm

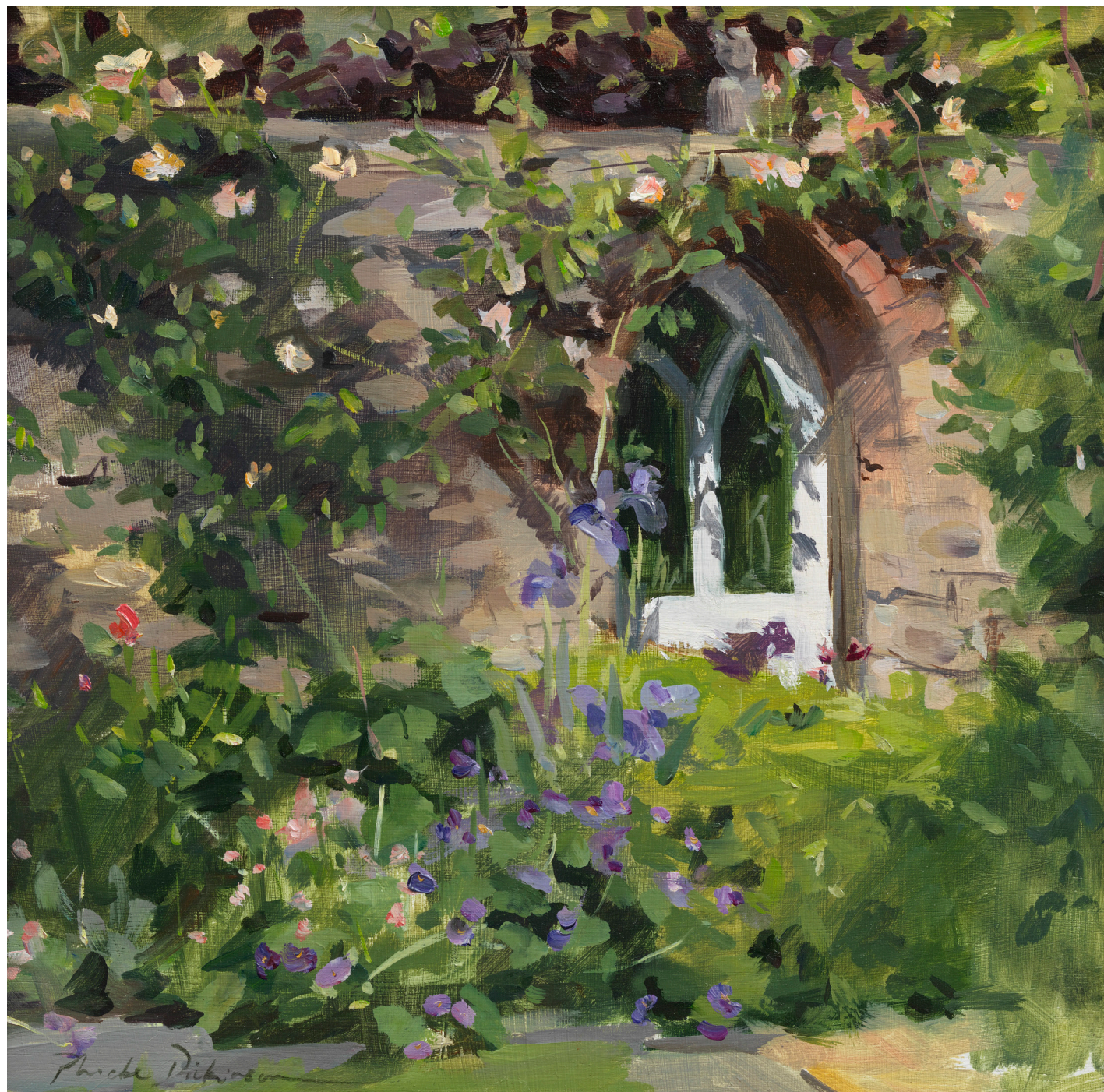


20 Rose
Oil on canvas
145 x 122cm



21 Alliums in the Potager
Oil on board
45 x 57cm

22 The Gate in the Walled Garden
Oil on board
38 x 38cm





23 The Decorator at Work,
Castle Howard
Oil on canvas
84 x 104cm



24 View from the top of
Stancome Park
Oil on board
43 x 58.5cm



25 The Wildflower Meadow,
Highgrove Gardens
Oil on board
50 x 63cm

26 Lady Mary on Set at Highclere Castle
Oil on canvas
47 x 51cm





27 Girl in the Yellow Drawing Room

Oil on canvas

83.5 x 96cm

28 The Italian Garden

Oil on board

58 x 67cm





29 The Peach Room

Oil on board

70 x 59cm

30 The Rose Garden at Kiftsgate Court

Oil on board

49 x 60cm





31 Dog Sleeping in the Garden Door
Oil on board
44 x 50cm

32 Fairy Foxtrot
Oil on board
37 x 41cm





33 **The Antler Temple, Houghton**
Oil on board
58 x 63cm

34 **Stella with Willow**
Oil on canvas
56 x 46cm

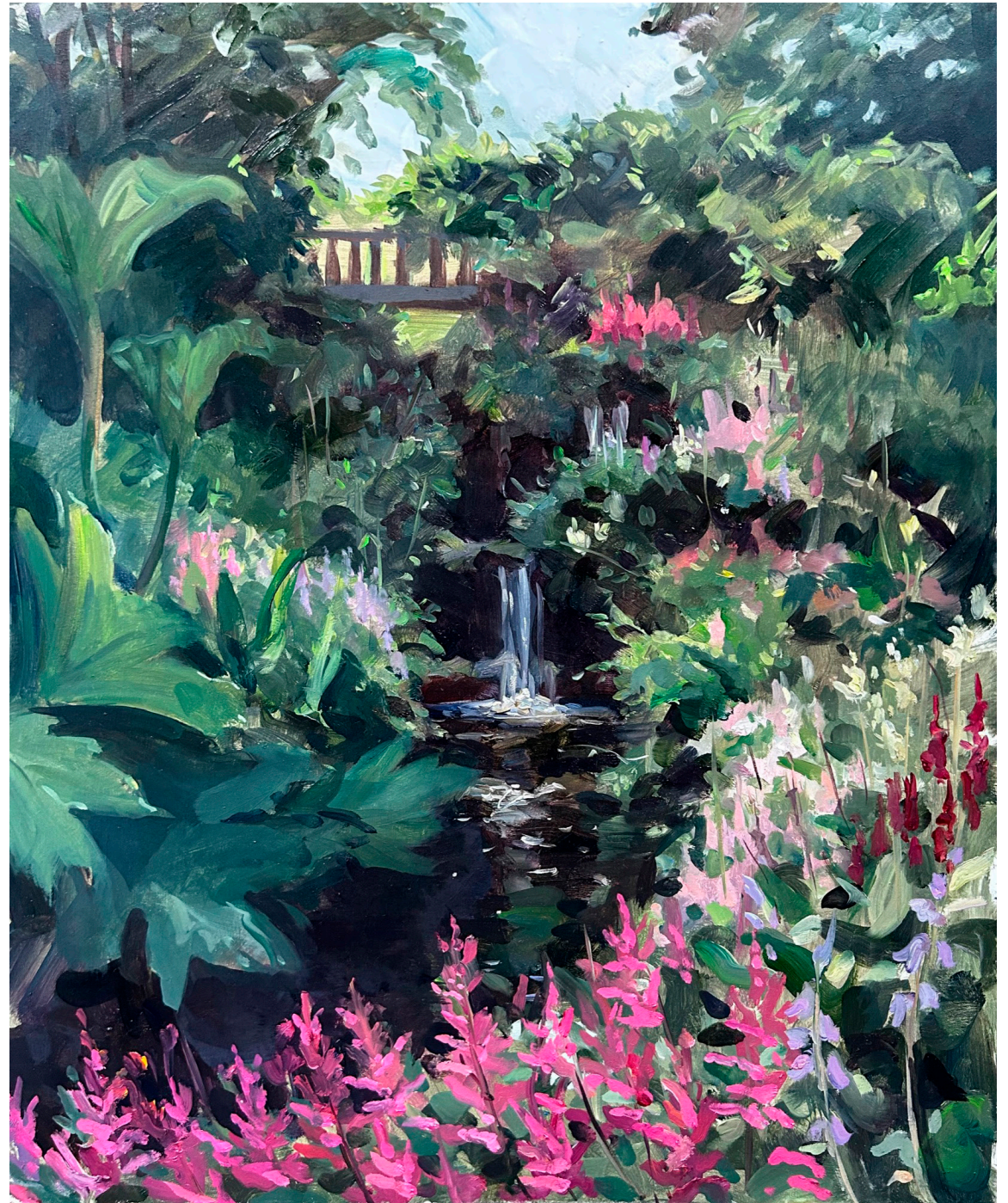




Phoebe Taylor

35 The Great Terrace at Iford Manor
Oil on board
42 x 54cm

36 The Water Garden at Hodnet
Oil on board
66 x 57cm





37 The Saunders Children
Oil on canvas
146 x 170cm

38 The Octagonal Hall at Badminton House
Oil on canvas
160 x 130cm





39 **Sunset Study**
Oil on board
27.5 x 47cm



40 **Midsummers Morning**
Oil on board
25.5 x 48cm



41 Boy in Austrian Jacket
Oil on canvas
118 x 77cm



42 The Dachshund Monument

Oil on board

41 x 46cm

43 The Fountain at Upper Sydling House

Oil on board

52 x 67cm

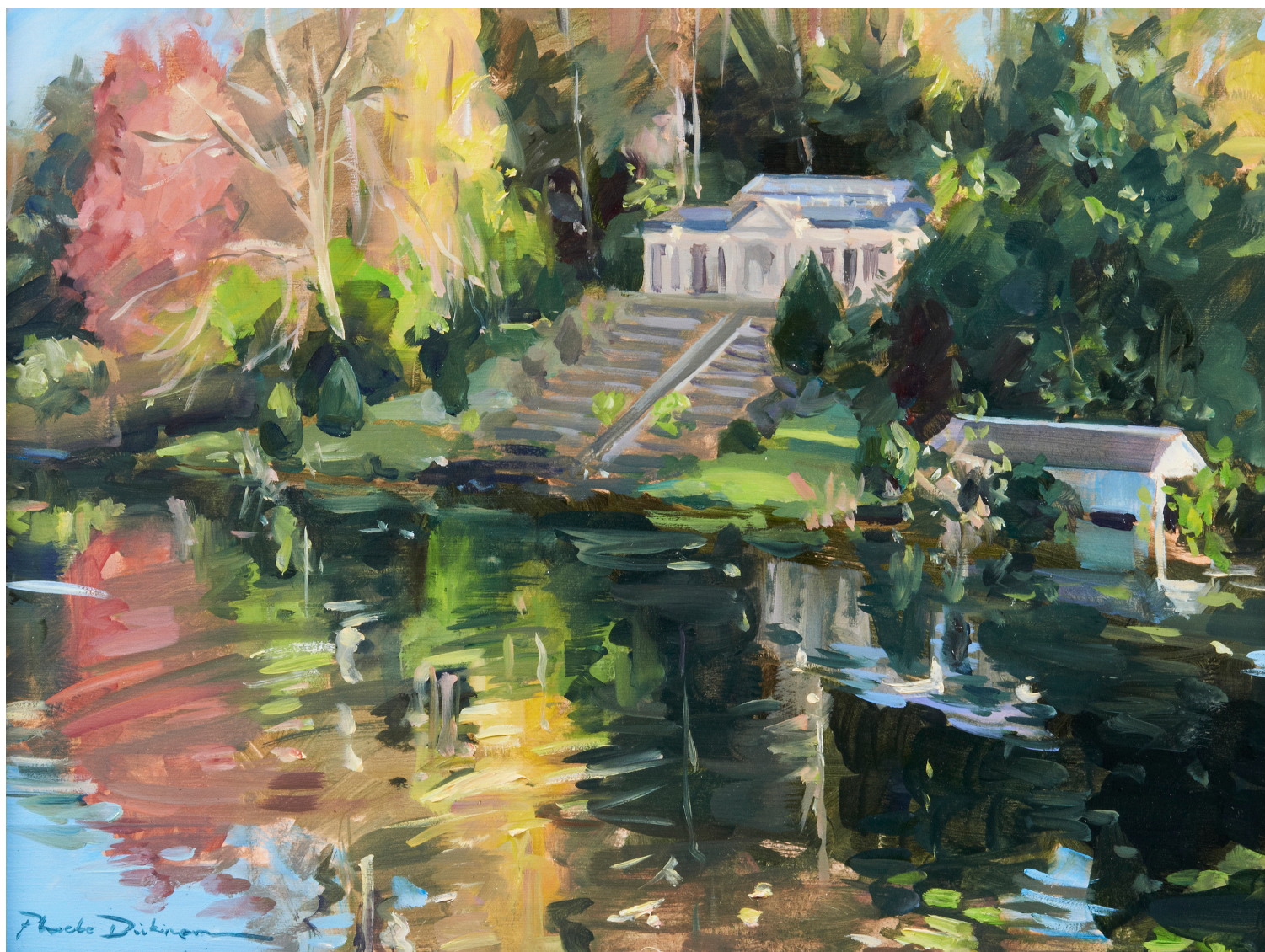




44 The Glasshouse at Houghton Hall
Oil on board
55 x 67cm



45 The Peacocks
Oil on canvas
153 x 183cm



46 The Temple at Stancombe Park
Oil on board
46 x 56.5cm



47 Hazy Cotswold Morning

Oil on board

51 x 66cm

48 Girl in a Pinafore

Oil on canvas

102 x 73cm





49 The Fountain

Oil on board

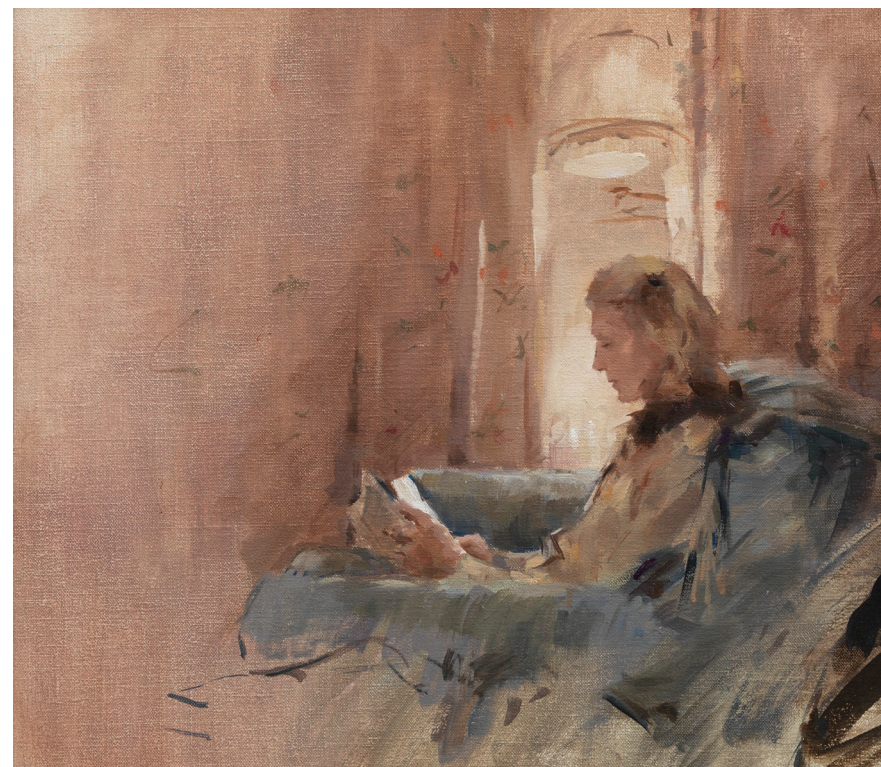
46 x 54cm

50 Paul and Gergely at Sheringham Hall

Oil on canvas

143 x 112.5cm





51 Pup at Easter
Oil on canvas
34 x 39cm

52 Mama Reading
Oil on canvas
43 x 48cm



53 Amara and Indigo
Oil on canvas
50 x 65cm



54 Lady Mary Having Breakfast in Bed

Oil on board

43 x 54cm

55 Sunbeams over the Valley

Oil on board

31 x 41cm





56 The Cypress Walk
Oil on board
56 x 46cm



57 **Four Sisters**
Oil on canvas
176 x 226cm



58 The Snowy Morning
Oil on board
39.5 x 47cm

59 The Potting Shed at Daylesford House
Oil on canvas
79.5 x 67.5cm





60 Secret Circle Garden
at Southrop Manor, Thyme
Oil on board
62 x 72cm



Portrait of a Girl
Oil on canvas
78 x 93cm



A Family Portrait
Oil on canvas
150 x 140cm

I would like to thank my father, Simon, and brother, Milo, and all of the team at Dickinson for having this exhibition at their gallery and for all their help.

Thank you to my husband, Luke, for the framing of the show and his endless support.

Thank you to my sister, Octavia, and her husband, Harry, for decorating the gallery with their beautiful furniture and fabrics.

Thank you to my mother, Jessica, for creating such a beautiful home and garden which has inspired this exhibition and for all her help.

Thank you to my brilliant assistant, Meg, for helping me to bring this show together.

Thank you so much to everyone who has supported this exhibition and who has been part of the process with bringing it to life.

BIOGRAPHY

Phoebe is a celebrated British artist. She has held five successful solo shows in London and New York and has exhibited at the Royal Society of Portrait Painters and the BP portrait award at the National portrait gallery. In 2022, Phoebe was awarded a certificate of excellence at the portrait society of America and in 2021 she was awarded the RP Award at the Royal Society of Portrait Painters for her portrait of Alethea. In 2019 she won the Burke's Peerage Foundation Award for classically inspired portraiture at the Royal society of Portrait Painters exhibition and was highly commended for the De Lazlo Award. Phoebe's portrait of The Cholmondeley Children at Houghton Hall was chosen for the BP Portrait Award 2018 exhibition at the National Portrait Gallery. She trained at the Charles H Cecil Studios in Florence; London Fine Art Studios; The Prince's Drawing School; and The Heatherley School of Fine Art.

Follow Phoebe on Instagram [@phoebedickinsonart](https://www.instagram.com/phoebedickinsonart)
All enquiries: studio@phoebedickinson.com

Phoebe
Photographed by Harry Cory Wright



